

13-184

CENTER 1/4 CORNER
Section 21, T29N, R6W.
Found 5/8" Iron Rod
S50°E 8" Twin Maple 14.15'
N60°E 6" Maple 16.96'
N70°W 8" Maple 33.35'
N66°W 1" Pipe 13.03'

TOWER COURT

N89°59'09"E

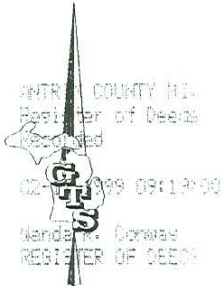
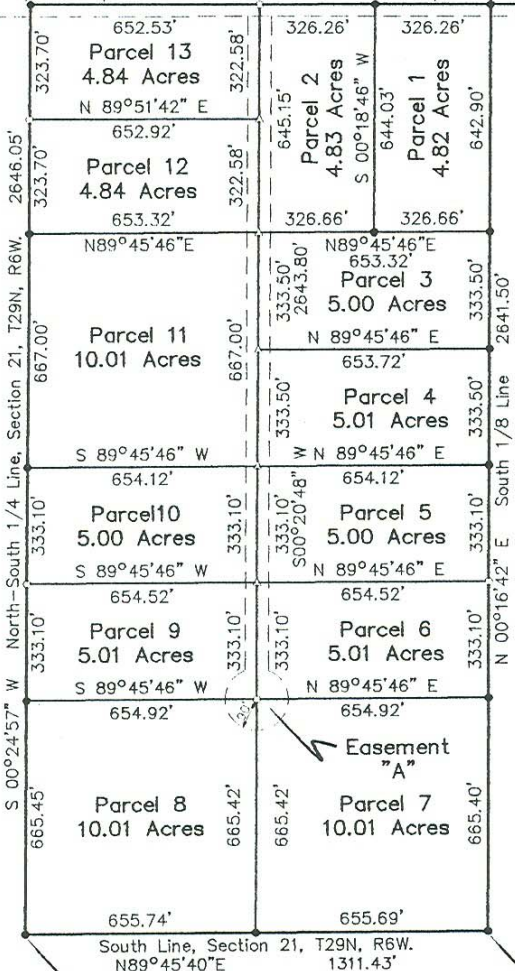
647.78'

EAST 1/4 CORNER
Section 21, T29N, R6W.
Found 1/2" Iron Rod
S60°E Power Pole 74.44'
S23°W 24" Maple 85.55'
North 5/8" Iron 4.45'
S58°W 12" R.Pine 51.64'

Parcel 14
9.87 Acres

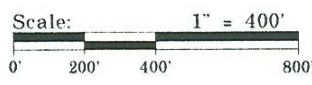
N C / L FIRE TOWER ROAD (6'6")

S 89°57'37" W East-West 1/4 Line, Section 21, T29N, R6W.
1305.05' R/W 652.53' 2610.10' R/W 652.52'



NOTE:
1/2" Iron Rods set @ all intersections
of Property lines & right-of-ways.

- LEGEND
- Iron Fnd.
 - Iron Set
 - ▲ P.K. Fnd.
 - △ P.K. Set
 - ⊗ Monument
 - Lath Set
 - (R) Record
 - (M) Measured



SOUTH 1/4 CORNER
Section 21, T29N, R6W.
Found 1/2" Iron Rod
N65°W 14" Maple 17.30'
N10°E 10" Maple 14.50'
S71°E 18" Basswood 18.50'
S50°W 20" Maple 25.60'

1/8 CORNER
Section 21, T29N, R6W.
Found 1/2" Iron Rod
N85°E 20" Basswood 3.00'
N10°E 6" Maple 30.70'
N46°E 10" Maple 24.75'
S23°E 8" Maple 51.55'

Revised: December 29, 1998. (Parcel 14)

I, NEIL B. LIVASY, a Professional Surveyor in the State of Michigan, do hereby certify that I have surveyed and mapped the hereon described parcel(s) of land; that the ratio of closure of the unadjusted field observations is within the accepted limits; and that I have fully complied with the requirements of P.A. 132 of 1970, as amended.

Neil B. Livasy
NEIL B. LIVASY
Professional Surveyor Number: 31611

Ratio of Closure: 1/10,000
Basis of Bearing: Beryl M. Jones Survey, Liber 353, Page 1249.

GRAND TRAVERSE SURVEYING
620 RAILROAD PLACE
TRAVERSE CITY, MI 49686
(616) 947-2555 Fax: 947-4771
e-mail: GTSurvey@aol.com
Located at the T.C. Train Station.

For:
WOODLAND DEVELOPMENT COMPANY

Part of the SE 1/4 of Sec. 21,
T29N, R6W, Mancelona Twp.,
Antrim Co., Michigan.

Date: October 31, 1998. File No: 98-5522
Drafted By: DWRomine-CD-3 Sheet: 1 of 5